

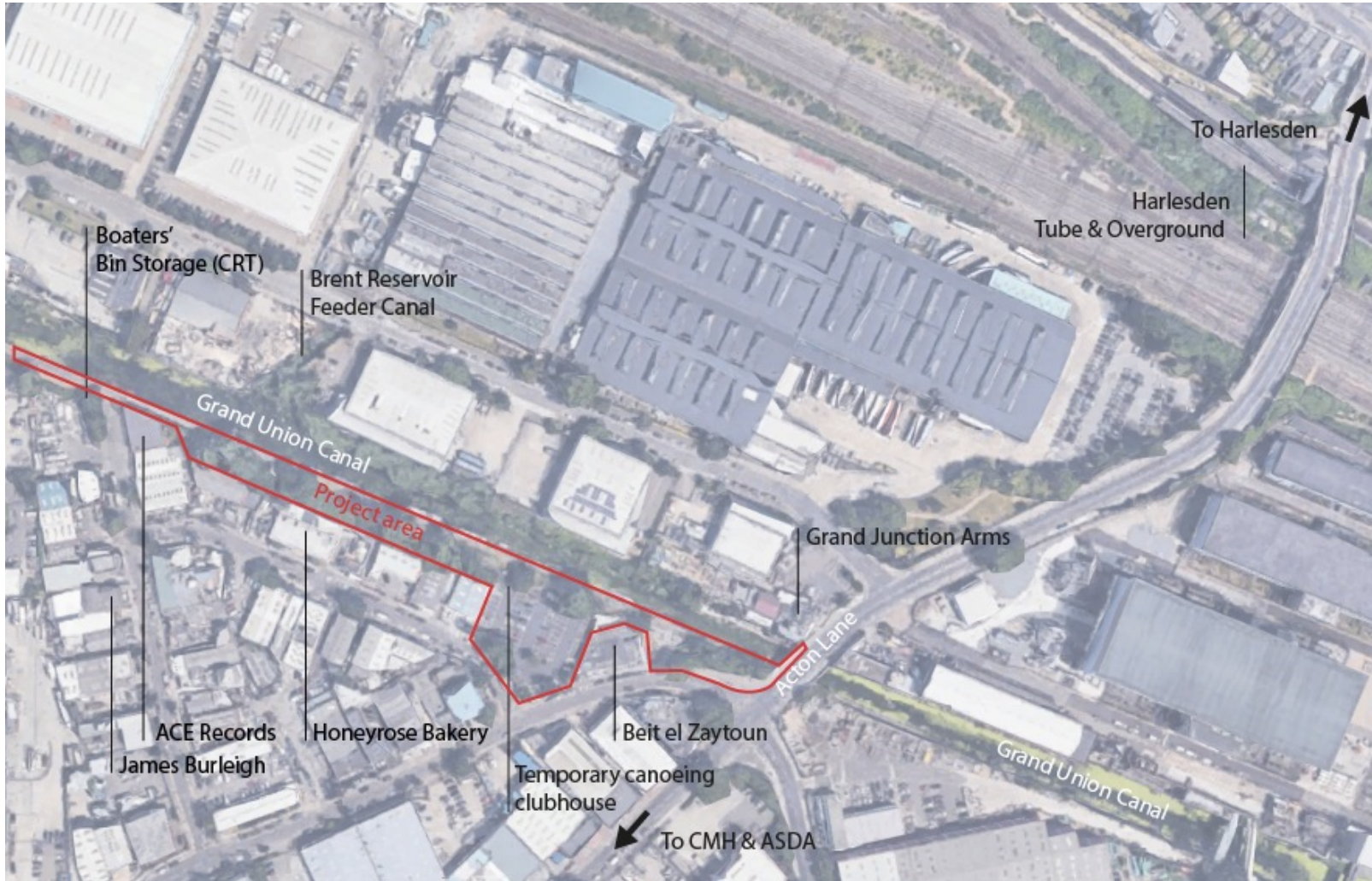
5 January 2022

OPDC
OLD OAK AND
PARK ROYAL
DEVELOPMENT
CORPORATION

Harlesden Canalside

in the making

Objectives



Transforming Harlesden Canalside into a pleasant public space for boaters, workers in the area, and local residents.

This means:

1. Delivering facilities shared by different users and communities;
2. Demonstrate good canalside placemaking and public realm;
3. Promote community engagement and stewardship.

Engagement so far...

Activities & uses for the Harlesden Canalside hub

The possibility of a structure and social space to bring people together as a community was received with excitement. A cafe and meeting place were commonly supported.

Strong support was received for a 'landmark' meeting place that brings people together. Cyclists & boaters supported a place for repairs, to come together and share skills

All residents see the hub as a social space; a space that brings people together as a community with activities for children and adults and ability for small groups to rent space

Youth groups Phoenix rising, Abundance Arts, Ultra Education, Scouts and the Sharks were interested in a space to run activities. There is also interest in running a music studio

A community café or safe space was a popular idea to rest, hydrate, clean up and use the facilities. A farmers market was suggested

Groups who support the under-represented, including the elderly and those with disabilities, encouraged amenity provision to support accessible use of the canal

Supporting our under-represented community

Improving accessibility is key to making Harlesden Canalside a space for everyone to enjoy. Safe use of the canal at night was a key concern raised by many residents in particular.

Residents have raised concern over safety along the canal and that women are left feeling vulnerable

Lack of evening activity, lighting, overgrown planting, poor visibility and lack of police presence contributes to the feeling and perception that the canal is unsafe at night

Physical accessibility, particularly paths and ramps, should be improved to encourage everyone to use the canal

Some residents raised concerns about rough sleepers and displaced members of the community

Wheelchair users expressed feeling left out of the conversation, as their experience of accessing the canalside and water activities are minimal due to inadequate path access

Environment

The environment is a key concern that was mentioned in all detailed 1-2-1 conversations with Anita, particularly supporting a more pleasant and green environment.

More needs to be done to keep the canal clean and safe. Residents would like to see action to reduce the amount of fly tipping and general rubbish, as reflected on social media groups

Longer term maintenance, management and ownership are key concerns for consideration

Space is currently contested. Creating wider paths is key to encourage safe use of the canalside for pedestrians, cyclists, runners and those with disabilities

More accessible use of the canal is also key in supporting healthier lifestyles

A balance must be maintained between encouraging wildlife and creating an aesthetically pleasing space. A couple of groups called for green spaces to be protected

Youth & legacy

Schools, youth groups and residents felt strongly about opportunities for children & young people in the area. A safe place to be, learn & play was repeated by all.

Many people feel strongly about creating opportunities for young people in the area

Working relationships with local businesses will help encourage local people into work and create business opportunities

Schools, youth and activity groups suggested an 'on-site' classroom or indoor teaching space

Harlesden has a unique culture & character that should be celebrated

Residents, Newman CC, Scouts, Sharks, US Trust and QPCS were specifically interested in 'on the water' activities

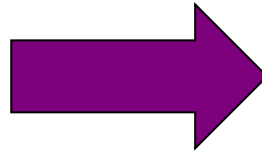
Engagement so far...

Community input

Partner conversations

Stakeholder conversations

Delivery & M+M feasibility



5 Project Packages

1. Boater Facilities
2. Canal Garden & Landscaping
3. Outdoor Activity Space
4. Canoeing Club & pontoon
5. Moorings for local organisations

Key Partners

1. LB Brent – landowner & operator
2. CRT – landowner & operator
3. The Sharks – operator
4. Other local organisation/s TBC – operator/s

HARLESDEN CANALSIDE

CONCEPT SKETCH

Boater Facilities

A hard surface fence-to-canal with canopy and a strip of utility connections against the fenceline prepare the space to gradually accommodate a new bin storage, elsan/pump out, drinking water access etc...

Sturdy work benches can be used to fix boats.

Dense planting at the western corner contains the space and reduce clutter. Realigned curb and access arrangements, and removal of existing planter open up perspectives onto the canal from Steele Road.

Canal Garden

This particularly sunny part of the area provides beautiful views onto the canal and its wildlife.

New dense planting following the curvy alignment of existing mature trees will structure the space and create pockets for seating and space for an outdoor gym.

Amphitheatre

A concrete hardstanding extends from the towpath into the green space, facing dedicated moorings for a community barge. The level change is solved with stepped seating built into the landscape. Water and electricity connections are locked away into the seating.

The landing of the ramp is widened allowing for cyclists to turn both ways.

Two dedicated mooring spaces with electricity & water mains connections are provided here.

Wayfinding

Creative wayfinding beacons at key locations along the canal and the street provide visibility and interest for passers-by.

Supergraphics on the car park fence show the way towards the Canoeing Club.

Precedent image: creative wayfinding in Molenbeek, Brussels.



Canoeing Club

Painted tarmac extends in front of the storage container(s) and clearly marks the entrance to Harlesden Canalside.

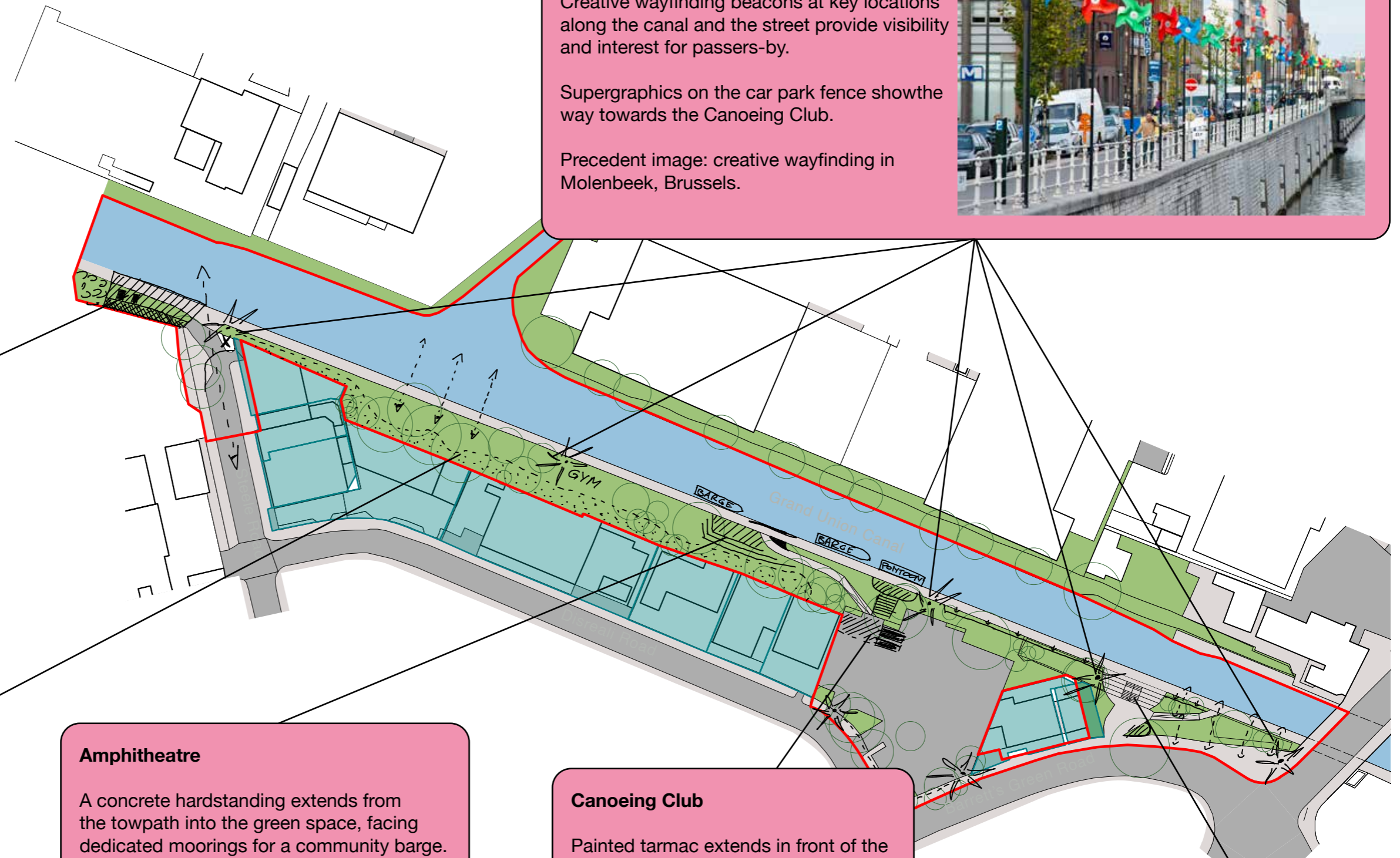
New stepped access leads down from the car park to the existing seating area, and a new floating pontoon.

New dense planting between the car park and the towpath reduces clutter.

Acton Lane Corner

The towpath is widened and the existing stepped access is improved.

Low planting and branches are cut back or removed to open up perspectives from the street onto the canal.



STEELE ROAD ENTRANCE & BOATER FACILITIES



A coherent surfacing from fence-to-canal will create a 'plug-and-play' sapace for future boater facilities. Existing and future boater facilities will be pushed against the fenceline to reduce 'dead' spaces prone to fly tipping, and covered with a canopy.



Decluttering of the Steele Road entrance will open up views onto the canal and help to clearly signal canal access from this point. Access control for CRT service vehicles will need to be assured.

Concrete deck extending between the fenceline and the canal.

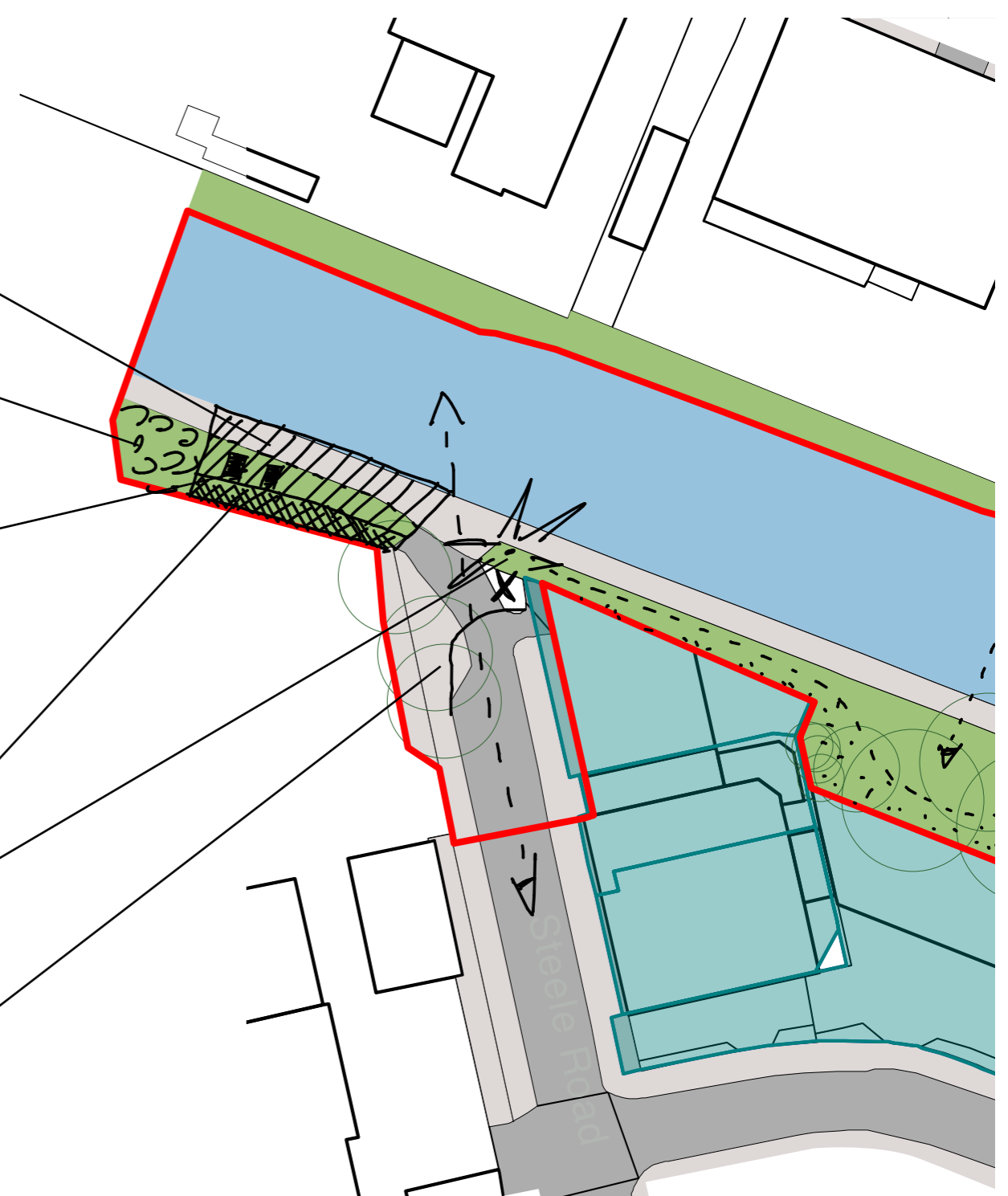
Dense vegetation to structure the space

Sturdy concrete work benches for boat fixing.

Retaining wall, canopy and strip of utilities against the fenceline for boater facilities (bin store, elsan/pump out, drinking water, etc...).

Creative wayfinding beacon.

Curb and access control realignment, and removal of existing planter to open up views onto the canal from Steele Road.



CONCEPT SKETCH

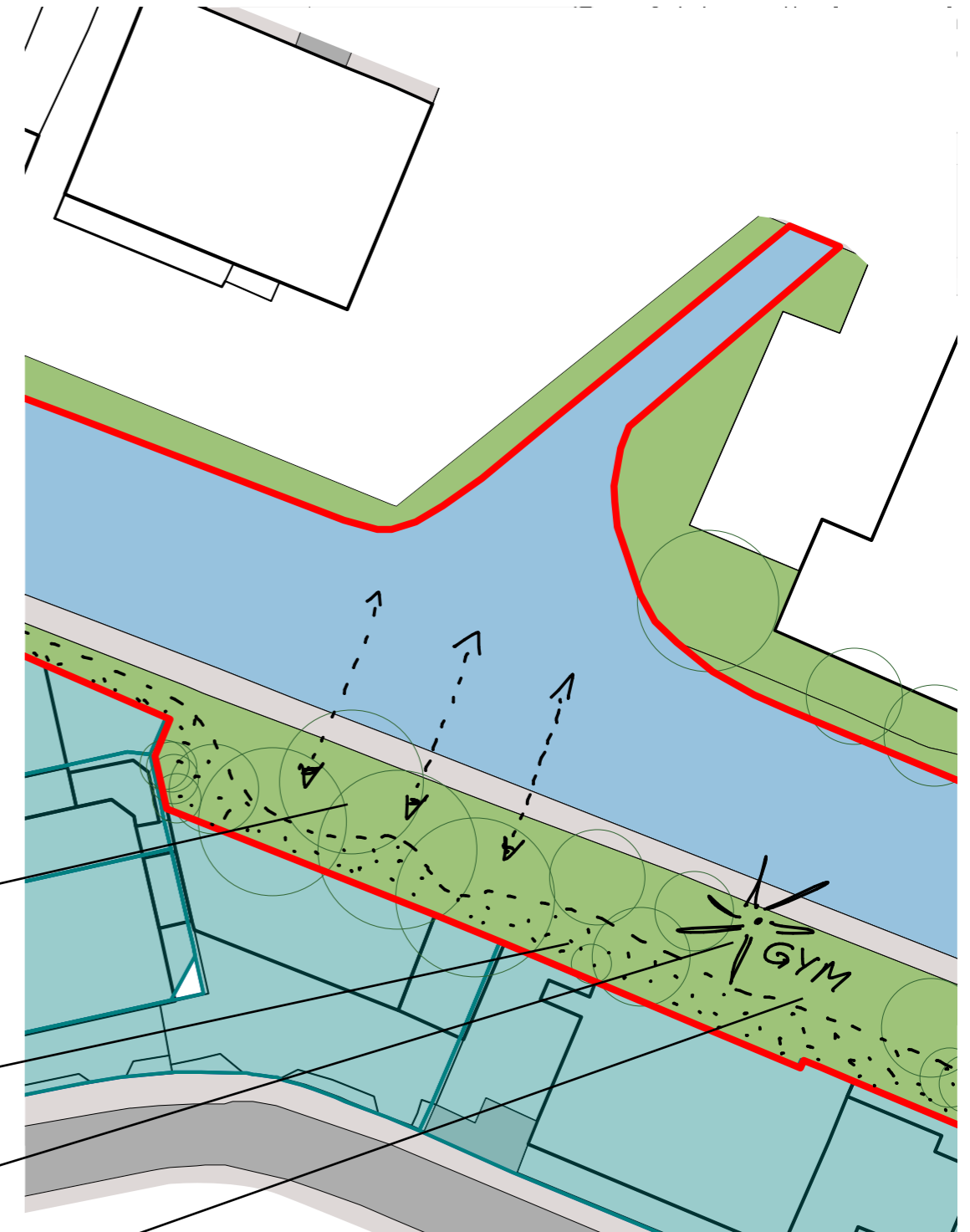
CANAL GARDEN



The area's mature trees provide park-like qualities, with views onto the canal and its wildlife. Low buildings allow the area to bathe in sunlight in the afternoon. Added dense vegetation will follow the existing tree line to help structure this space and create pockets for new seating arrangements and an outdoor gym.



Dense planting along adjacent buildings such as in this photo will act as a buffer to existing buildings and help resolve fly tipping and ASP issues. It will help to structure the space and create opportunities for biodiversity and nesting areas.



New seating arrangements with view onto the water and wildlife

Dense vegetation to structure the space, habitat creation and act as buffer to adjacent businesses.

Creative wayfinding beacon.

Outdoor gym

CONCEPT SKETCH

AMPHITHEATRE



A hardstanding with seating built into landscape opens up towards the canal and the towpath ramp.



Reducing the length of the handrail will allow for the landing of the ramp to be widened, providing better access to the towpath.



The level change allows for concrete seating to be built into the landscape. Precedent: Olympic Park, London.



A simple and low maintenance structure allowing lights and banners to be put up as part of events and activities will be installed as part of the amphitheatre.

Dedicated community moorings with water/ electricity access

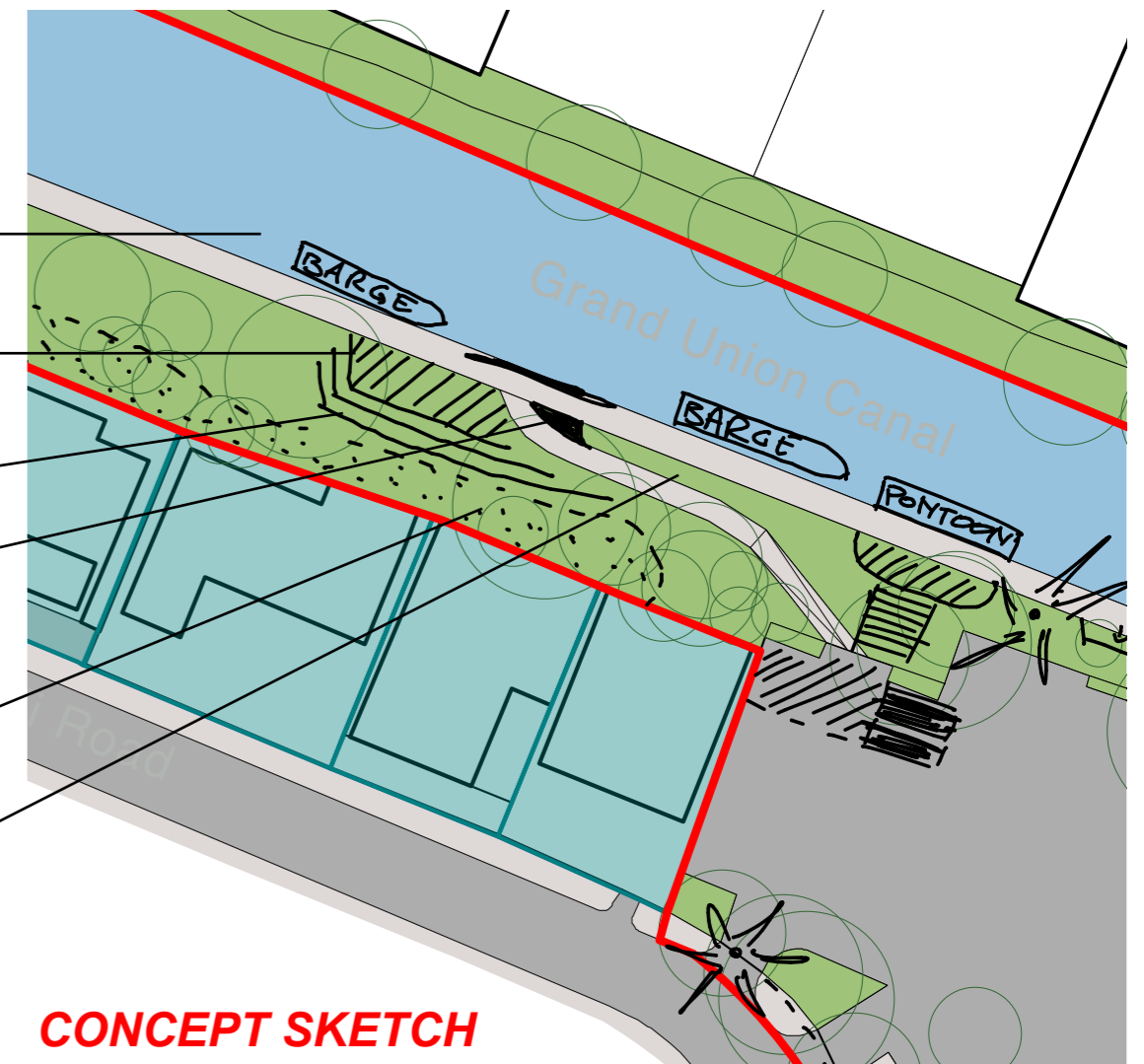
Concrete hardstanding and structural element

Concrete seating and water/electricity connections built into the landscape

Widened landing of access ramp

Dense vegetation to structure the space, habitat creation and act as buffer to adjacent businesses.

Bulky handrail reduced to a minimum or removed entirely.



CONCEPT SKETCH

CANOEING CLUB



Painted tarmac and cycle parking will clearly demarcate the space outside the storage containers as public space and help refrain cars from parking there.



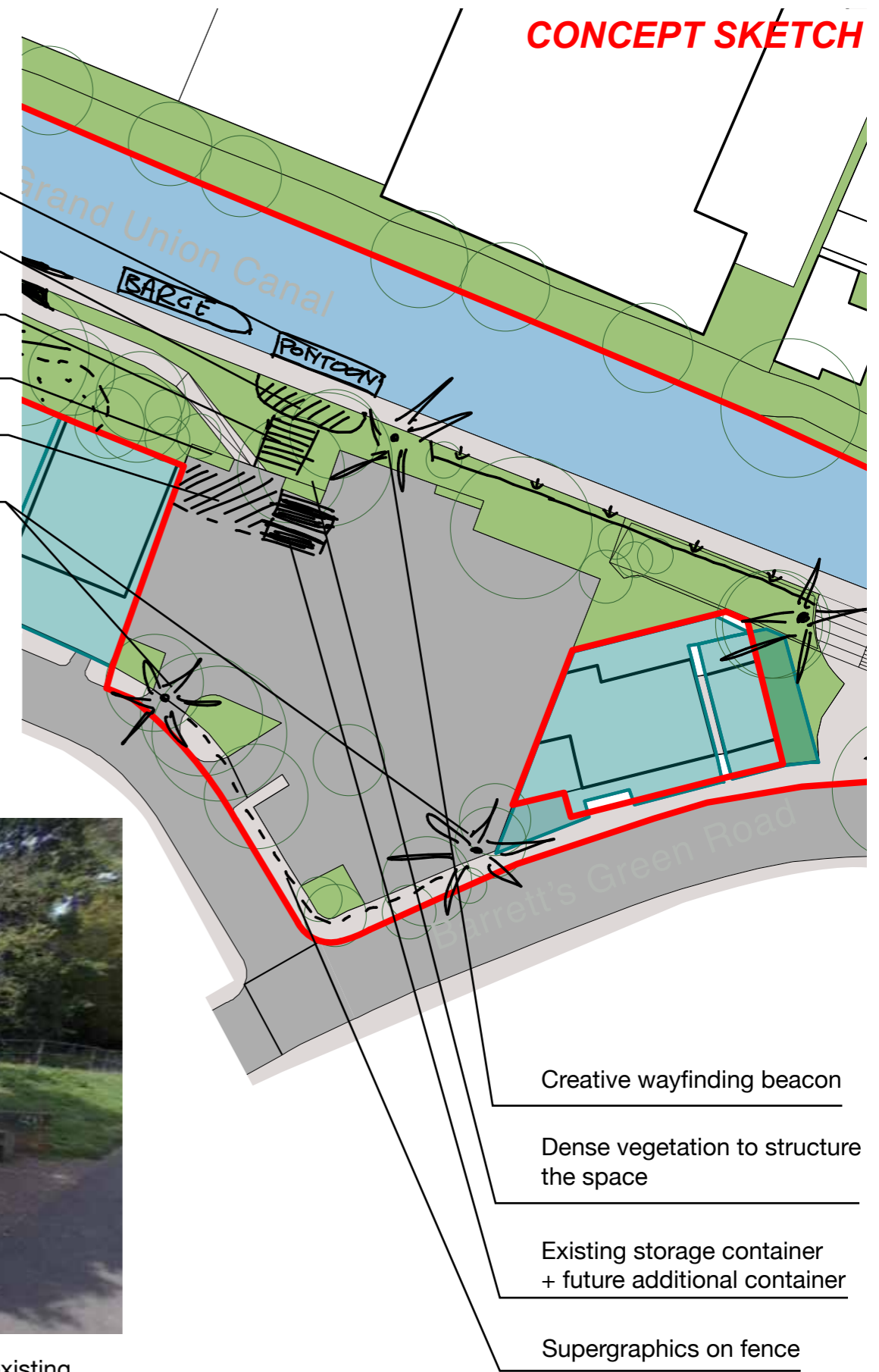
Supergraphics on the car park fence and signage above the car park entrance will help people find their way to The Sharks Canoeing Club.



A new stair case will connect the car park with the existing seating area and towpath, and provide easy access from the canoeing club's storage containers to the future floating pontoon.

CONCEPT SKETCH

- Floating pontoon
- Existing seating area
- New concrete steps
- Bicycle parking
- Painted tarmac
- Signage on car park entrance



- Creative wayfinding beacon
- Dense vegetation to structure the space
- Existing storage container + future additional container
- Supergraphics on fence

ACTON LANE CORNER

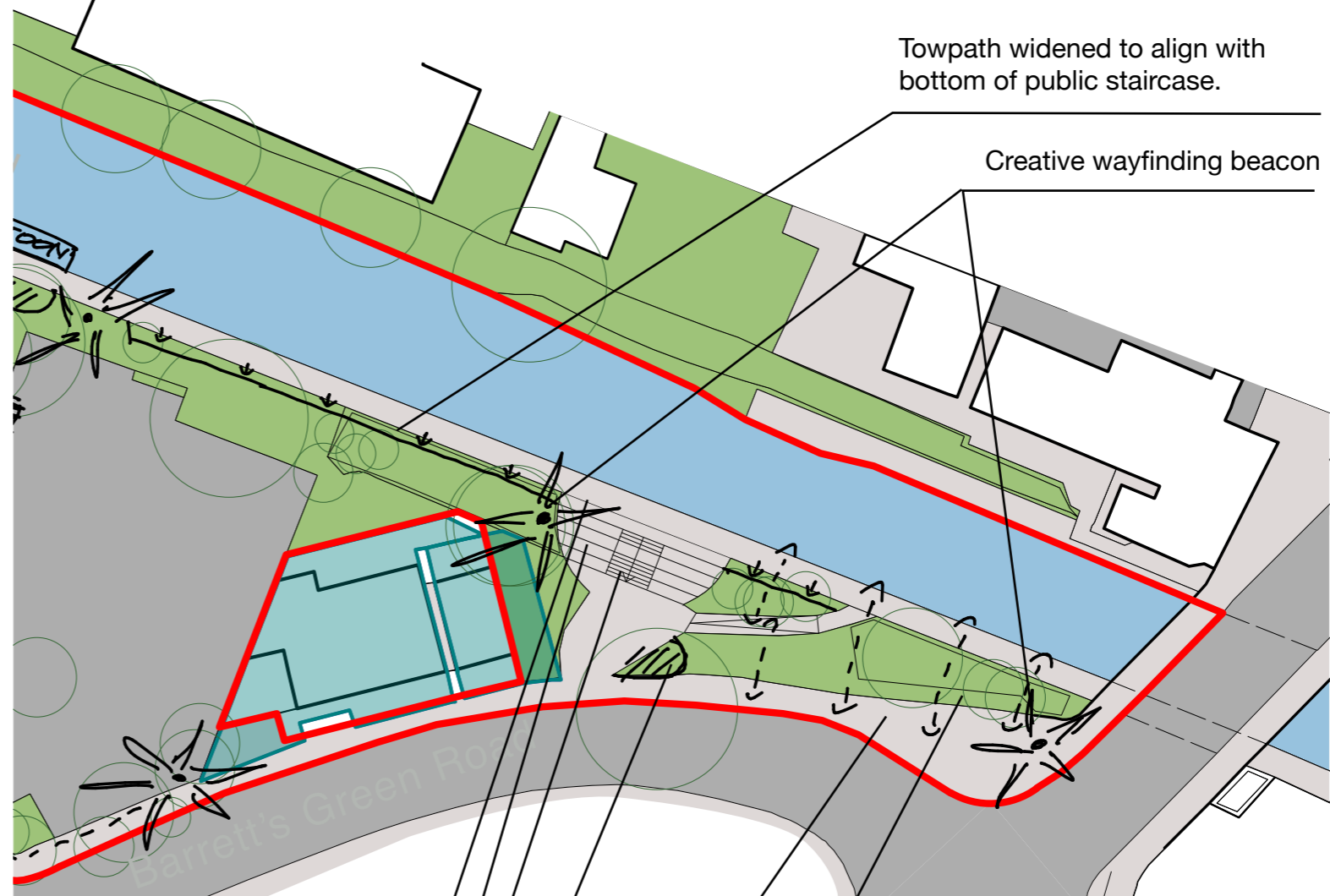


The towpath can be widened to align with the public staircase further ahead.



A new pocket park can be created by adding seating and opening up the fenceline to the street.

CONCEPT SKETCH



Towpath widened to align with bottom of public staircase.

Creative wayfinding beacon

Legible London wayfinding marker moved to street level.

Added wooden surfacing to make the concrete seating more welcoming.

Bulky double handrail reduced to single handrail, or removed.

New pocket park with seating.

Noticeboards restored.

Low vegetation and branches cut back to open views onto the canal.

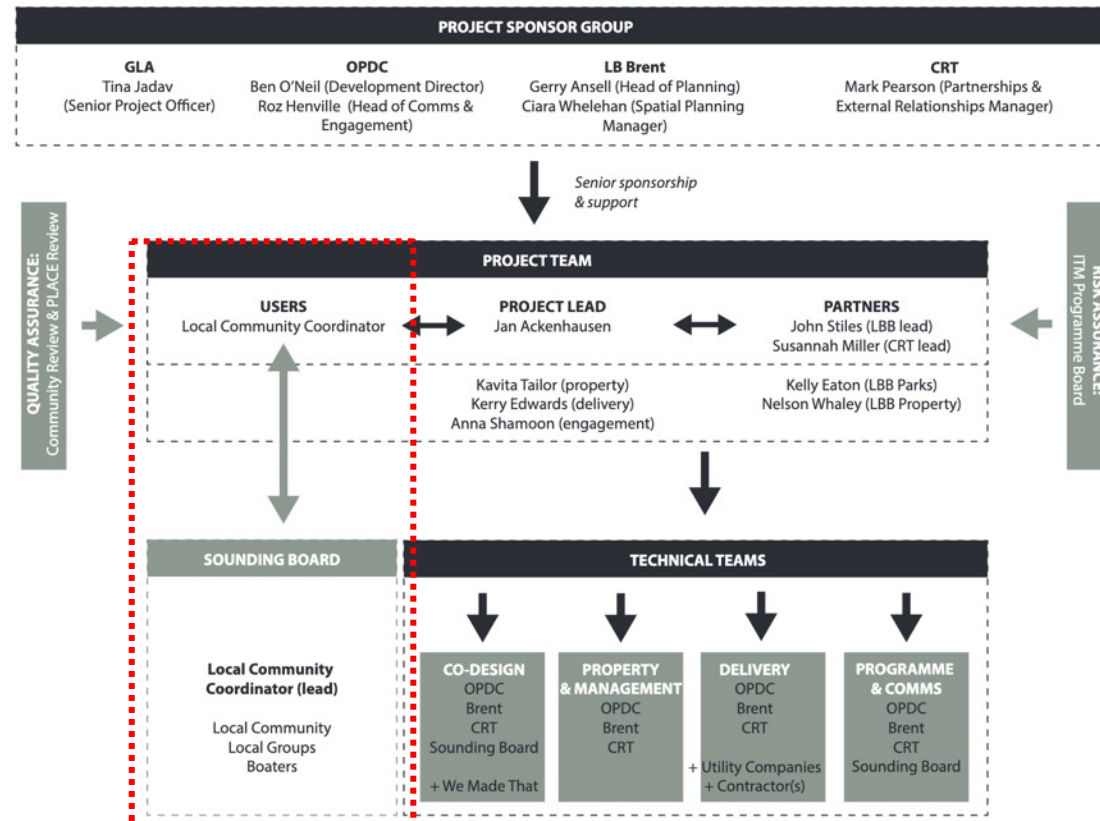


Thinning out low vegetation will open up views onto the canal and help signal access to the towpath and Harlesden Canal-side. The vandalised noticeboards will be restored.

Sounding Board Group

Your role:

- Providing **user-driven input** into the design, delivery and operational aspects of the project;
- Advise on user groups and other stakeholders who may be interested in **activating the space upon delivery** of the project;
- Taking on an active role in **running activities in the space**;
- Exploring **opportunities for setting up a “Friends Of” group** to adopt Harlesden Canalside upon completion of the improvement works;
- Assisting and advising OPDC with **curating an inaugural programme** of activities run by and with local groups and residents.



Programme

Dec 2021 – Jan 2022	Concept design
Feb 2022 – March 2022	Formal consultation & detailed design
April – June 2022	Technical design & planning
July – Sept 2022	Contractor procurement
From Oct 2022 onwards	Delivery

Some bits may be delivered slightly earlier:

- Vegetation maintenance & new planting;
- Any other interventions that don't require planning
- ...

Thank you!